

# Wascana *Centre*

A place for you!



**2013-14 ANNUAL REPORT**  
**APRIL 1, 2013 - MARCH 31, 2014**

# Wascana Centre Authority

## Board of Directors 2013 – 2014

Appointed by the Lieutenant Governor in Council  
(Five Directors):

Bill Hutchinson  
Wayne Clifton  
Ron Dedman  
Al Nicholson  
Rod Sieffert

Appointed by resolution of the City of Regina  
(Three Directors):

Mayor Michael Fougere  
Councillor Mike O'Donnell  
Councillor Barbara Young \*

Appointed by the Governors of the University of Regina  
(Three Directors):

Dr. Vianne Timmons  
Dale Schoffer  
Nelson Wagner

Secretary to the Board:  
Bernadette McIntyre

Your guidance and leadership are valued and appreciated.

## Management Staff

Chief Executive Officer:  
Bernadette McIntyre

Chief Financial Officer:  
Rachel Ratch

Chief Operating Officer:  
Mike Mamona

Manager of Infrastructure:  
Patrick Coulthard

Manager of Human Resources:  
Ranae McKenzie

Manager of Horticulture & Forestry:  
D'Arcy Schenk

Manager of Community Relations:  
Carissa Robb

Manager of Maintenance:  
Nelson Quevillon

Manager of Safety:  
Jim Morgan

Administrative Support Coordinator:  
Jenifer Huber \*  
Elizabeth Hill \*

\* Denotes part year



**Vision ...** To be a place of recreation and beauty for all to enjoy throughout the seasons – the pride of Saskatchewan.

**Values ...** Caring, Integrity, Teamwork, Innovation

# Chair's Message



# F

or the past two years, I have had the responsibility and privilege of serving as Chair of the Wascana Centre Authority Board of Directors. In this role, I have seen first-hand how Wascana Centre – a place known as “the jewel of our city” – continues to bring people together in our community.

Wascana Centre has been bringing people together right from its very inception, when it was created in 1962 through a unique partnership between the Province of Saskatchewan, the City of Regina, and what is now the University of Regina. This partnership, which continues to this day, has maintained a strong connection between our three institutions – something which I have seen regularly through the collaborative work that takes place at the Board level.

What is most impressive, however, is that this partnership continues to bring people together where it matters most – right in Wascana Centre itself! Throughout the year, no matter what the season or the weather, Wascana Centre plays host to organized events that bring thousands of people to the park. Even more important, perhaps, is the fact that the park is also home to thousands of “informal events” each year – canoe outings, games of touch football, and family barbecues, to name just a few.

Wascana Centre truly is the heart of our community – a place for all of us – and I am confident that it will continue to be the heart of our community for decades to come. Through the input of staff, stakeholders, and members of the public, the Comprehensive Review we have undertaken is providing guidance on how we can all work together to steward Wascana Centre for the next fifty years and beyond. Over the past year, that vision has extended to all aspects of Wascana Centre – from workplace safety, to maintenance and enhancement of facilities, to educational programming focused on conservation, sustainability, and the environment.

As I complete my term as Chair of the Wascana Centre Authority Board of Directors, I would like to extend a particular thank-you to the staff of Wascana Centre. The passion you show for your work is evident to everyone who enjoys Wascana Park, and all of us owe you a great debt for the role you play in bringing us together in a space that is so beautiful and so important to our quality of life in this community.

Sincerely,

A handwritten signature in black ink that reads "Vianne Timmons".

Dr. Vianne Timmons  
Chair, Wascana Centre Authority Board of Directors

# CEO Message

# W

ascana Centre Authority continues on a path to fulfill our vision of being a place of recreation and beauty for all to enjoy throughout the seasons – the pride of Saskatchewan. The Centre is a diverse place with many purposes and opportunities. We are a major attraction in the capital city of this great province, the seat of government and the home to the iconic Legislative Building. It is indeed a place of recreation, both organized and free play, in beautiful park like areas. Our natural conservation area is a priceless natural habitat in the heart of the capital city, easily accessible and exceptionally educational. Wascana Centre truly has something for everyone.



Ensuring Wascana Centre is safe, accessible and enjoyable for all requires the support of the entire community. The Province of Saskatchewan, the City of Regina and the University of Regina, (the funding partners) work collaboratively around the Boardroom table, in operational meetings and on the frontline. With the support of donors, volunteers, community groups and the business community, the Authority works diligently to maintain and improve the wonderful legacy handed down to us for over 100 years ago.

As Dr. Timmons completes her two year term as Chair of the Board of Directors, we express our appreciation for her leadership, compassion and support and look forward to working with her and the University into the future. Thank you to the entire volunteer Board of Directors who dedicate so much of their time and expertise. Your guidance and vision are key elements in the continuing success of Wascana Centre, the completion of the Comprehensive Review process and the challenges and opportunities the future brings.

The Management and staff of Wascana Centre are dedicated and committed to making Wascana Centre the best it can be with the resources available. Although there are many challenges, there are more success stories. Over the past year, we have hosted hundreds of community events, implemented a comprehensive safety program, developed a multi-year trail and road renewal plan and commenced the implementation. The Walter Scott statue was commissioned and installed, the Finishing Line Facility was community funded and design completed and the Wascana Place heating/ventilation/air conditioning (HVAC) project was designed and initiated. Staff have continued to keep the Centre accessible and clean, remove snow, care for the turf and the forest, as well as create amazing floral beds. Amazing work – thank you!

Community support from groups like the Friends of Wascana Marsh and passionate employees have contributed to the success of our conservation programs such as goat grazing, goose management, Junior Naturalist, noxious weed control, a Carp study and the Monitoring Avian Productivity and Survivorship program to name a few.

Wascana Centre is the heart of Saskatchewan's capital city, with diverse opportunities for everyone because of the vision decades ago and the dedication of our current leaders and staff. We welcome everyone to your back yard which is truly "a place for you".

A handwritten signature in black ink, appearing to read "M. Bernadette McIntyre".

M. Bernadette McIntyre  
Chief Executive Officer



We welcome everyone to your back yard which is truly "a place for you".



# Operations Report

# W

ascana Centre Authority Operations consists of different departments each featuring a highly integrated team of specialists. These departments complement one another and together they ensure Wascana Centre is unique, pristine and beautiful for all to enjoy.

Wascana Centre is both parkland and a set of linked development sites. It is governed by Wascana Centre Authority, whose express mandate is to ensure the development of both the landscapes and the buildings is of highest degree of quality possible. The Authority does this, through the establishment of a master plan to which all development must conform, and through the review of all development by architectural, landscape, engineering and heritage advisors and design committees.

Three main committees work in harmony with Operations and have a regulatory role to advise the Authority whether or not to approve a given design. An equally important role is to collaborate with the proponents and their designers in the development of projects which meet high architectural and engineering standards. (Wascana Master Plan 2006) These advisory committees are;

**Architectural Advisory Committee** – members consist of Architects and a Landscape Architect

The role of the Architectural Advisory Committee is to review architectural improvements in two ways: informally through dialogue with the project designers; and formally by recommending approval. The informal dialogue occurs early in the design process. It is intended as a collaborative effort to ensure quality of the project through outside design critiques.

**Engineering Advisory Committee** – members are Professional Engineers and are from the Provincial Government, City of Regina and the University of Regina

The role of the Engineering Advisory Committee is to review and comment on the engineering aspects of all proposals where public safety is concerned. The Committee will check whether appropriate professional engineering expertise has been applied to the design of site and project servicing, and that the design is sensitive to operational and maintenance impacts, particularly where those for which WCA crews will be responsible. In cases where engineering is integrated with a larger project, the review is generally undertaken together with the Architectural Advisory Committee.

**Heritage Advisory Committee** – members are appointed from the Provincial Government, City of Regina, University of Regina and two members appointed by Wascana Centre Authority.

The role of the Heritage Property Advisory Committee began with the identification of buildings and structures in the Centre which they perceived to have heritage value. In cases where it is proposed that any of these buildings be demolished or remodeled, the Committee advises the Authority on whether or not approval should be granted.

## **Maintenance:**

Maintenance is very important to the Centre as this department is responsible for the mechanical shop, stores, equipment orders, major supply purchases such as fertilizer and salted sand, snow clearing and removal, turf maintenance, irrigation, and a host of other integral duties that are performed within

the Centre daily. The maintenance department also works very closely with the Manager of Community Relations for all events that are in Wascana Centre.

The spring clean-up, summer turf care and fall shut down is always done with perfection and with great pride. Spring is the time of year when our maintenance staff more than doubles with seasonal staff so Wascana Centre can become and stay a beautiful place of reflection, relaxation and recreation.

### **Infrastructure:**

With a diverse infrastructure in Wascana Centre, this department must not only be multi-talented but good at problem solving. Our history within the Centre has provided many challenges for upkeep and repairs. Some of the unique designs that are custom built require innovative thinking and problem solving at its best so that the integrity of these facilities is not compromised when being repaired.

The construction staff are kept very busy with new installations of landscaping, structure repair, sign maintenance which includes the installation of TAC compliant signage throughout the Centre.

### **Forestry and Horticulture:**

The urban forest is the most recognized asset Wascana Centre has to offer the public and we need to ensure our forestry efforts keep the existing trees and shrubs healthy. The crews are very busy pruning trees and shrubs to keep disease away along with a reforestation plan to ensure tree and shrub growth is sustainable now and into the future.

Our horticultural specialists grow all the planted flowers in our three greenhouses not only for the entire Centre but also for the City of Regina. This keeps the department busy designing, growing, planting and maintaining all the beautiful flower beds within Wascana Centre. They are also responsible for the tree nursery in which most of the trees used are grown from seedlings.

The early rising pesticide crew does a great job of pesticide, herbicide and insecticide control so our green beauty shines through. This department also controls unwanted pests within Wascana Centre so everyone can enjoy the green spaces without too much concern.

### **Major Projects within Wascana Centre for 2014;**

Finishing line facility located on Pine Island – This is a judging station that will be used for water events and activities such as rowing, canoeing, kayaking and sailing.

Wascana Place Heating Ventilation and Air Conditioning (HVAC) upgrade – The heating and cooling of Wascana Place has become an issue over the last few years and this upgrade was a necessity.

Paving of gravel pathways – In keeping with improving public amenities WCA was able to pave the gravel pathway from the Marina north to Pine Island making the walking surface smooth and more enjoyable.

New Maintenance facility – This project was necessary to house our stores operation and provide a place for equipment to be stored over winter, which prolongs the life of the large maintenance equipment.

Operations are a key to Wascana Centre Authority's vision and enabling all to enjoy Wascana Centre every day to its fullest extent.

Mike Mamona  
Chief Operating Officer

# Safety First at Wascana Centre



Over the previous few years our safety record was not in line with our core values – Caring, Integrity, Teamwork and Innovation. This was of concern to employees, management, the Board, and participating parties. In 2012, the management team was reorganized and a Manager of Safety position was created. For the remainder of 2012 a new Safety Program was developed. It was introduced in early 2013 and became fully effective in August 2013.

The new Safety Program was and continues to be a big change. Initial changes have focused on personal protective equipment, improving training, and incident reporting. Authority employee's commitment to safety is very evident through the use of personal protective equipment – such as our blue or orange hard hats with the Aspen leaf logo. During 2013 almost 700 training seats were occupied by staff, on topics which included Powered Mobile Equipment, Workplace Hazardous Materials Information System, and Hazard Recognition and Control.

Although these changes have been rapid and had some challenges, improvements are already being realized. We are happy to report that for January through May 2014, there have been no time loss injuries, an improvement from two in the same period in 2013. Major equipment repairs are also on a declining trend, attributed to pre-shift inspections that identify issues for preventative maintenance.

Additional safe work practices and procedures continue to be developed and refined. Future plans also include a revised orientation program for new and returning staff.





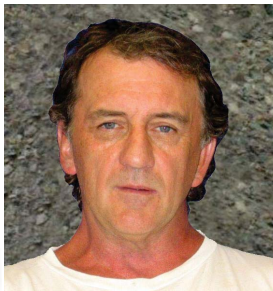
# Human Resources

**H**uman Resources is responsible for labour relations, human resources policies, and payroll / benefits. It also supports the organization by coordinating and advising on all staffing, dispute resolution and return to work. The year started with Human Resources working on staffing for the busy summer season, dealing with the challenges of seasonal staff turnover, and subsequent layoffs. Throughout all of 2013-14 efforts were also focused on bargaining for the Collective Agreement and changes to the Joint Job Classification Maintenance Plan.

In the fall, focus shifted to planning for a revised seasonal staffing process, implementation of the changes began in February 2014 with attendance at job fairs at the University of Regina and SIAST. In conjunction with the revised staffing process, a new orientation program was developed in conjunction with Safety and other departments. The new program will be ready to be deployed in 2014-15.

Wascana Centre Authority wishes to recognize four long serving employees that retired during the year:

- Howie Ross – 38 years of service
- Don Moore – 30 years of service
- Stan Kulach – 28 years of service
- Jenifer Huber – 20 years of service



# Events

# W

ascana Centre is home to a plethora of events throughout the seasons here in the Queen City and 2013 was no different. With almost 200 outdoor special events during the course of the year, there was no shortage of exciting happenings in the Centre. A few of the events that highlighted 2013 were Summer Invasion, the Regina Canada Day Celebration, Latinofest, National Aboriginal Day, and The Regina Highland Games.

Summer Invasion returned once again for its annual action sports and music festival. On July 1st, Wascana Centre was host to the annual Regina Canada Day Celebrations, drawing a crowd upwards of 30,000 people throughout the entire day. The day was kicked-off by the Royal Canadian Artillery, 7th Annual Plywood Cup took place on Wascana Lake, which is always a crowd favourite.

Latinofest took place behind the Royal Saskatchewan Museum, the 17th annual Regina National Aboriginal Day Celebration took place in Wascana Centre. The Regina Highland Games were held on the University of Regina campus,





Wascana Centre is home to a plethora of events throughout the season and 2013 was no different.

# Naturalist

# 2013

was an exciting year for Wascana Centre's Monitoring Avian Productivity and Survivorship (MAPS) program. 630 birds were captured over the six banding sessions making 2013 our most productive year yet. The total number of birds captured, banded and released at the Wascana MAPS station is now just shy of 2000! 2013 saw the addition of two new and unique species to our list of banded birds; a Black-billed Cuckoo and Sedge Wren. Both of these species were likely breeding in the Habitat Conservation Area (HCA) increasing the recorded number of bird species that use that space for breeding to 25 in all years and an additional 12 in some years. The ongoing success of the Wascana MAPS program continues to highlight the importance of Wascana Marsh and the HCA to bird Conservation in the Regina area.

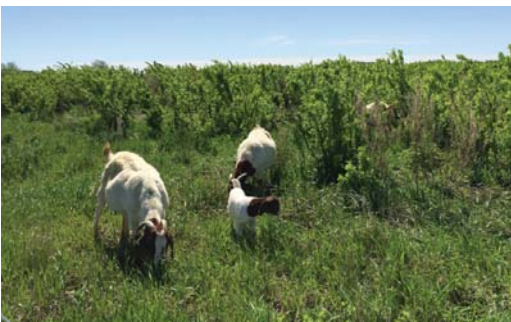
## Wascana Junior Naturalist

The spring and fall Wascana Junior Naturalist (WJN) sessions were a resounding success once again with all available spots filled. The program continues to connect children with nature in a variety of ways from nature based games to hands on learning. The new 'Wascana Snake' (A Honduran Milksnake) has been a hit and the Junior Naturalists have enjoyed learning about the *slithery* parts of the natural world. As always fun is an important part of learning and participants have enjoyed playing *predator and prey* where they learn about camouflage and the relationships between predator and prey.

## Canada Goose Management

Wascana Centre's Canada Goose Management Program continues to be successful in reducing the spring and summer Canada Goose population to a more natural level. In 2013 a total of 358 goose nests were found, down 40% from the 2005 high of 603 nests. Due to the drop in the number of nests and the exceptionally late spring the decision to not translocate geese to Cumberland House was made. After a summer of closely monitoring the geese and the reaction of WCA staff and the public it was determined that the goose population seemed sustainable at 2013 levels without requiring translocation. We will continue to assess on a year to year basis whether or not the number of Canada Geese using Wascana Centre warrants a goose roundup and subsequent translocation. Banding of Canada Geese is an extremely important part of Wascana Centre's Goose management plan and will continue as required, occurring in late June and early July.





# 2013 & 2014 Wascana Centre Donations



## **Corporate Partners:**

Affinity Credit Union  
Friends of Wascana Marsh  
South Saskatchewan Community  
Foundation Inc.  
The G. Murray and Edna Forbes  
Foundation

## **Park Champions:**

Jim Kenyon  
Paul Hartman and Martha McIntyre  
Canada Helps Org.  
Queen City Marathon Inc.  
Richard and Bernadette McIntyre  
United Way of Regina  
Ministry of Justice

## **Park Patrons:**

Carlson Wagonlit Travel  
Janet R. Galger  
IQ Metrix  
Loranne Myrah  
Studiofitt Regina

## **Park Contributors:**

Glen Downton  
Matthew Dean  
Bob Ewart  
Karina Developments Ltd.  
Concept Media Ltd.  
Judith Verbeke  
Anonymous

## **Park Supporters:**

Janet Ayer  
Christina Brown  
Diedre Mallett  
Margaret Skeel  
Anonymous

## **Memorial Donations:**

Sheila Campbell  
Gerda  
Rosemary Helliwell  
Jardin Schnurr

## **DIVAS in the Park Contributors:**

Bennett Dunlop Ford  
Access Communications  
Andrew Peller Estates  
Conexus Credit Union  
Cold Stone Creamery  
Disc Golf Regina  
David's Tea  
EVRAZ Place  
Hotel Saskatchewan  
– Radisson Plaza  
Nancy McEwen  
Meeca Massage  
Last Mountain Distillery  
Park Lane Jewellery  
Nucery  
Paper Moon  
Sweet Ambrosia  
RCMP Heritage Centre  
Saskatchewan Roughriders  
Saskatchewan Science Centre  
Three Farmers  
Track & Trail  
Tombox Tools  
Unique Day Spa  
University Club  
Wascana Flower Shop  
Westwind Aviation  
Willow On Wascana

## **Tree Sponsorships:**

Randy Graham  
Donna King  
Shanda Litke  
Lee Anne Schienbein  
Nature Saskatchewan  
Queen City Tree Service

## **Tree Planting Sponsors:**

Molsons Canada  
TD Friends of the Environment  
Tree Canada Foundation

## **Media:**

CBC Saskatchewan  
Harvard Radio  
Global TV  
The Leader Post  
Rawlco Radio

## **Grants:**

ASUPCA  
City of Regina  
Province of Saskatchewan  
University of Regina  
Saskatchewan Arts Board

## **Pine Island Finishing Line Facility:**

Clifton Associates  
Midgard Project Management  
Mitchell Architect Ltd.  
PCL  
Regina Hotel Association  
Regina Rowing Club  
Wascana Racing Canoe Club

# Wascana Centre Authority Financial Highlights

Please see [www.wascana.ca](http://www.wascana.ca) for complete audited financial statements.

## Financial Highlights

As at March 31 2014

Assets	
Current Assets	\$ 3,033,752
Capital Assets	3,985,574
	<u>\$ 7,019,326</u>
Liabilities and Equity	
Current Liabilities	\$ 2,524,702
Deferred capital contributions	999,900
Equity	3,494,724
	<u>\$ 7,019,326</u>

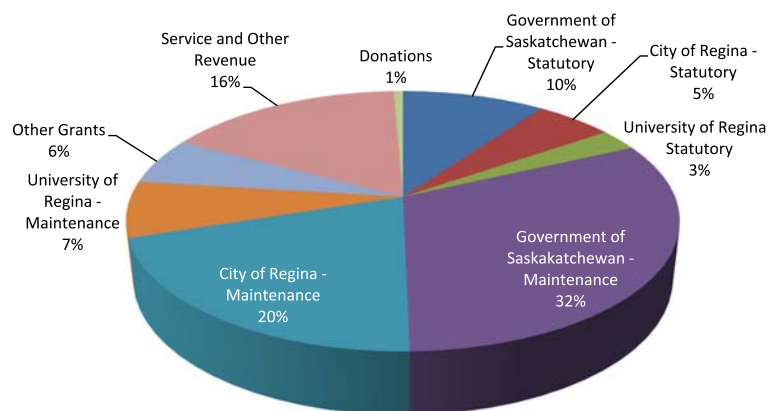
## Financial Highlights

For the year ended March 31 2014

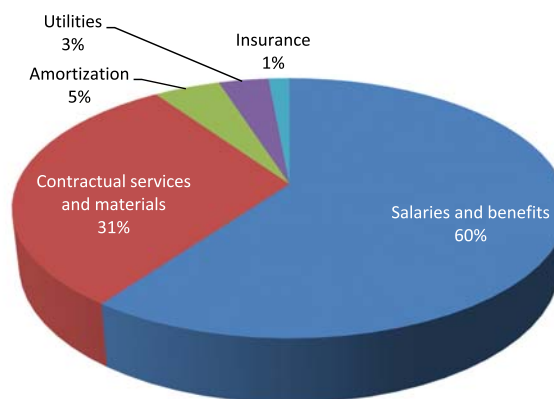
Grants	\$ 6,513,325
Service and Other Revenue	1,307,621
Donations	41,176
	<u>7,862,122</u>
Salaries and benefits	\$ 4,646,305
Contractual services and materials	2,362,968
Amortization	358,303
Utilities	269,540
Insurance	113,740
	<u>7,750,856</u>
<b>Net Income (Loss) for the year</b>	<u>\$ 111,266</u>

In 2013-14, the Authority dedicated the majority of grant funding towards maintenance of about 2,300 acres of land. Core tasks include: turf, snow removal, paths / trails, roadways, public washrooms, urban forest, floral beds, pest management, signage, irrigation, event coordination, naturalist programming, conservation, and by-law enforcement. As depicted in the graphs, Statutory funding for WCA only comprises 18% (2013- 16%) of total revenues with the majority of operations being funded through special purpose grants or service revenues. Addressing increased maintenance requirements of the participating parties' and the Authority's aging infrastructure continues to be challenging.

2014 Revenue



2014 Expenditures





ourWascana

# Wascana at a glance



930 HECTARES

WASCANA CENTRE  
Regina, SK



405 HECTARES

STANLEY PARK  
Vancouver, BC



341 HECTARES

CENTRAL PARK  
New York City, NY



280 HECTARES

PARC MONT-ROYAL  
Montréal, QC



161 HECTARES

HIGH PARK  
Toronto, ON



276  
SPECIES OF BIRD



36  
SPECIES OF MAMMAL



6  
SPECIES OF FISH



4  
SPECIES OF AMPHIBIAN



2  
SPECIES OF REPTILE



52  
MAJOR BUILDINGS



49  
MINOR BUILDINGS



77  
SPECIAL FEATURES



14  
MONUMENTS



7.4  
KM OF PAVED PATHS



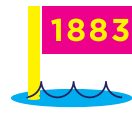
120 HECTARES

AREA OF WASCANA LAKE



2.5 BILLION  
LITRES

VOLUME OF WATER



1883

LAKE CREATED



8

ISLANDS IN  
WASCANA LAKE



1.5 MILLION

CUBIC METRE EXPANSION  
DURING BIG DIG



300  
SPECIES OF TREES  
AND SHRUBS



100K  
EACH TREES AND SHRUBS



100  
SPECIES OF ANNUALS



100  
SPECIES OF PERENNIALS



5.6  
KM OF NATURAL PATHS



5  
MILLION VISITS



2300  
COMMUNITY &  
SPORTING EVENTS



50  
FULL-TIME EMPLOYEES



1220  
TEMPORARY RESIDENTS



13K  
STUDENTS AT  
UNIVERSITY OF REGINA

## Wascana Centre Authority

Office location:

Wascana Place

2900 Wascana Drive, Regina, Saskatchewan, Canada

Mailing address:

Wascana Centre Authority

P.O. Box 7111, Regina, Saskatchewan S4P 3S7

Website: [www.wascana.ca](http://www.wascana.ca) • Email: [wca@wascana.ca](mailto:wca@wascana.ca)